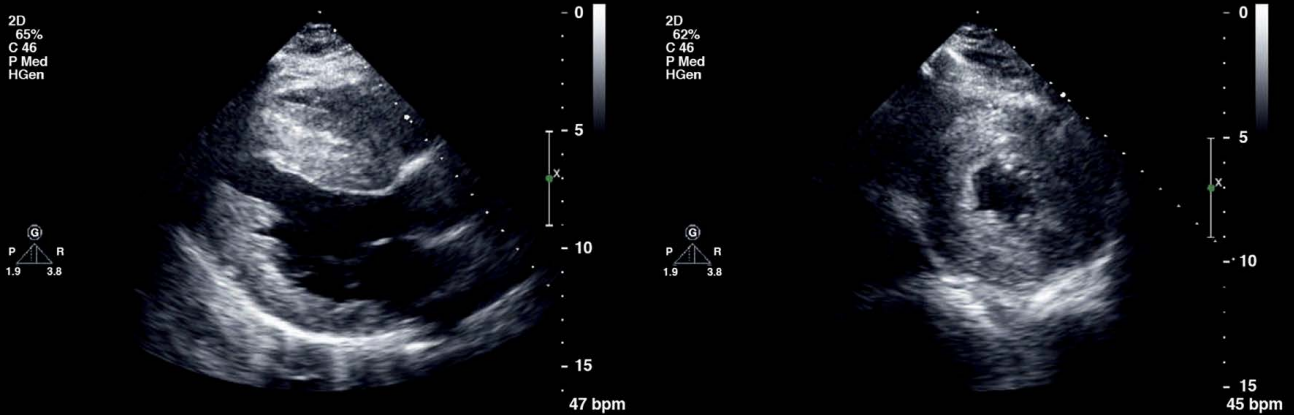


KSE 2017 Satellite Symposium

Fabry Disease: Cardiologist's Point of View

November 24 (Fri.) 16:30~18:20
4F Art Hall, Grand Walkerhill Seoul



Ref. Sherif F. Nagueh et al. JACC: CARDIOVASCULAR IMAGING, Vol 8. No. 7, 2015 (July 2015):828-45)

Figure 6. Echocardiographic Findings From a Patient With Fabry Disease



한국심초음파학회
Korean Society of Echocardiography

KSE 2017
Korean Society of Echocardiography

KSE 2017 Satellite Symposium

Fabry Disease: Cardiologist's Point of View

Chairman *Prof. Hae Ok, JUNG (Catholic Univ.) / Prof. Goo-Yeong, CHO (Seoul National Univ.)*



16:30~17:00

Fabry Disease and its Cardiac Involvement

Prof. Woo-Shik, KIM (Kyung Hee Univ.)



17:00~17:30

A Different Look at HCM : Fabry Disease

Prof. Jee Hee, KIM (Catholic Univ.)



17:30~18:00

Multi-modality Imaging for Diagnosis & Treatment in Cardiac Fabry Disease

Prof. Geu-Ru, HONG (Yonsei Univ.)

18:00~18:20

Q&A / Discussion